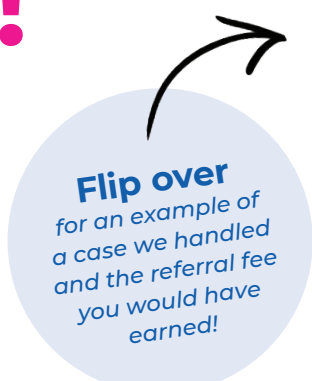


Plate full? Don't specialize in personal injury?

Refer serious injury cases to our firm!

Auger Hollingsworth regularly accepts client referrals from lawyers and licensed paralegals.

We pay referral fees in accordance with the rules of the Law Society of Ontario.



Flip over
for an example of
a case we handled
and the referral fee
you would have
earned!

You might want to refer to our firm if:

- You are an **out-of-province or out-of-country lawyer** handling an Ontario injury claim or know someone in need of an experienced injury lawyer in Ontario;
- You are an **Ontario lawyer or paralegal who does not have the availability** to handle a serious injury claim at the moment; or
- You are an **Ontario lawyer or paralegal who does not practice personal injury law but has a seriously injured client** or know of someone who needs help; or
- You want to add a **regular stream of income** to your own law firm.

WITH US, IT'S IN GOOD HANDS

Lawyers and paralegals who refer cases to Auger Hollingsworth often do so because of our industry recognition and reputation.

- Our expert team will handle **all aspects** of your clients' case, including a trial if required.
- **Rest assured** that your clients will thank you. We pride ourselves on outstanding client satisfaction.
- We provide a **written referral agreement** in accordance with the Law Society of Ontario. We have a tracking system to keep you apprised of the status of every referral you place with us.

CONTACT US AT:

brenda@ahinjurylaw.com

OTTAWA OFFICES: 613 233-4529

TORONTO OFFICE: 416 445-3529

 **augerhollingsworth** accident & injury lawyers

IF YOU REFER A CASE LIKE THIS TO US...

Stan's Story

Names and a few identifying details have been changed to protect our client's privacy. Every case is different.

Stan was a successful salesman in his late 30's. He was married and had young children.

One afternoon, Stan was stopped at an intersection when he was struck from behind by a delivery truck. The collision was so forceful that it pushed Stan's car ahead about 2 metres. Stan hit the car in front of him. Stan's body whipped forward and back and Stan struck his head on the headrest.

The police ticketed the truck driver who later pleaded guilty to following too closely. Stan's vehicle had \$6500 in damage.

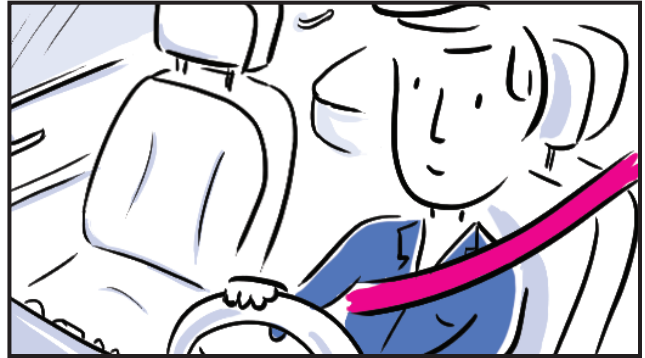
Stan's Traumatic Injuries

Stan declined an ambulance but called his wife, Linda, who came to pick him up. The following day, Stan was not feeling well. Linda took him to an urgent care clinic. Stan was diagnosed with a concussion, a post-traumatic headache, and a whiplash injury to his spine.

For the next two months, Stan was unable to work or drive. Stan started to feel anxious about his inability to contribute to family life, and about his finances.

How Our Firm Helped Stan

As the pressure on the family increased, Stan's wife contacted Auger Hollingsworth. Within a few hours, Stan and Linda decided to hire us. We began to help coordinate all necessary medical and legal arrangements.



Our lawyers helped to prepare Stan for the lawsuit. The examination for discovery was a success. We had high hopes for mediation. However, the insurance company offered a low 6-figure amount that would not nearly be enough to compensate Stan for his losses.

Determined to help Stan reach a fair settlement, our team continued to build Stan's case. At the pre-trial, **we helped Stan reach a settlement offer that was 9 times more** than we had been offered at mediation.

Stan's Catastrophic Benefits Claim

After the case against the at-fault driver was over, we applied to the accident benefit company, as we felt Stan could qualify as catastrophically injured. Armed with the catastrophic designation, we were able to **win Stan an additional 7-figure amount**, further helping Stan and his family to recover from his traumatic incident.

**If you had referred this case to Auger Hollingsworth,
your referral fee would have been \$25,000.**

REFER A SERIOUS INJURY CASE TO US TODAY:

brenda@ahinjurylaw.com

OTTAWA OFFICES: 613 233-4529 TORONTO OFFICE: 416 445-3529